

SNM 300

SIMAG

320 kg Modular Ice Machine

Complete range: SNM 300 – SNM 500

Technical features

- Hermetic compressor, 230/50/1 or 230/60/1
- Choice of air or water cooled condensers
- Stainless steel auger and freezing cylinder evaporator
- Equipped with an electronic control board
- Ice breaker made in specially strengthened alloy, allowing for greater extrusion pressure to deliver a dryer-quality of nugget ice 92% dry
- Long lasting stainless steel roller-bearings
- Double protection-electronic rotation sensor and drive coupling - on gear motor and gear reducer
- Low-water sensor protection on refrigeration and gear motor system
- Optical ice level sensor for machine shut down
- Stainless steel side panels in scotch-brite finish
- ABS plastic top cover

Matching bins

Machine	Bins		kg
SNM 300	CBT22EFCD	R100	129
	CBT22EFCD	R130	168
	CBT30EFSD	R150	181
	CBT30EFSD	R190	243
	CBT42EFSD	R250	252
	CBT48FMCD	R300	406
	CBT52FMCD	R400	478
	●	RC200	210
	●	RC300	391

✓ : Direct coupling

● : Ice chute cut-out performed upon installation
CBTxxxxxxx: accessory needed

Voltage

230/50/1 Standard version

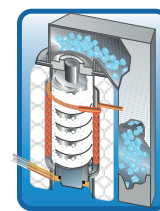
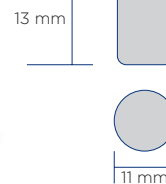
220-240/60/1 Available on demand

Technology and Certifications



Type of ice

Nugget Ice



Residual water content 8 %

Machine dimensions

Net size WxDxH	538 x 663 x 650 mm
Net weight	78 kg
Shipping size WxDxH	600 x 740 x 770 mm
Shipping weight	87 kg

MILANO OFFICE
Sales Dept.
Tel. +39 02 93900215
e-mail: sales@simag.it
Service Dept.
Tel. +39 02 93960357
e-mail: service@simag.it

SIMAG FAR EAST
Singapore Office
Tel. ++65 6738 5393
e-mail: scotsman@scotsman.com.sg

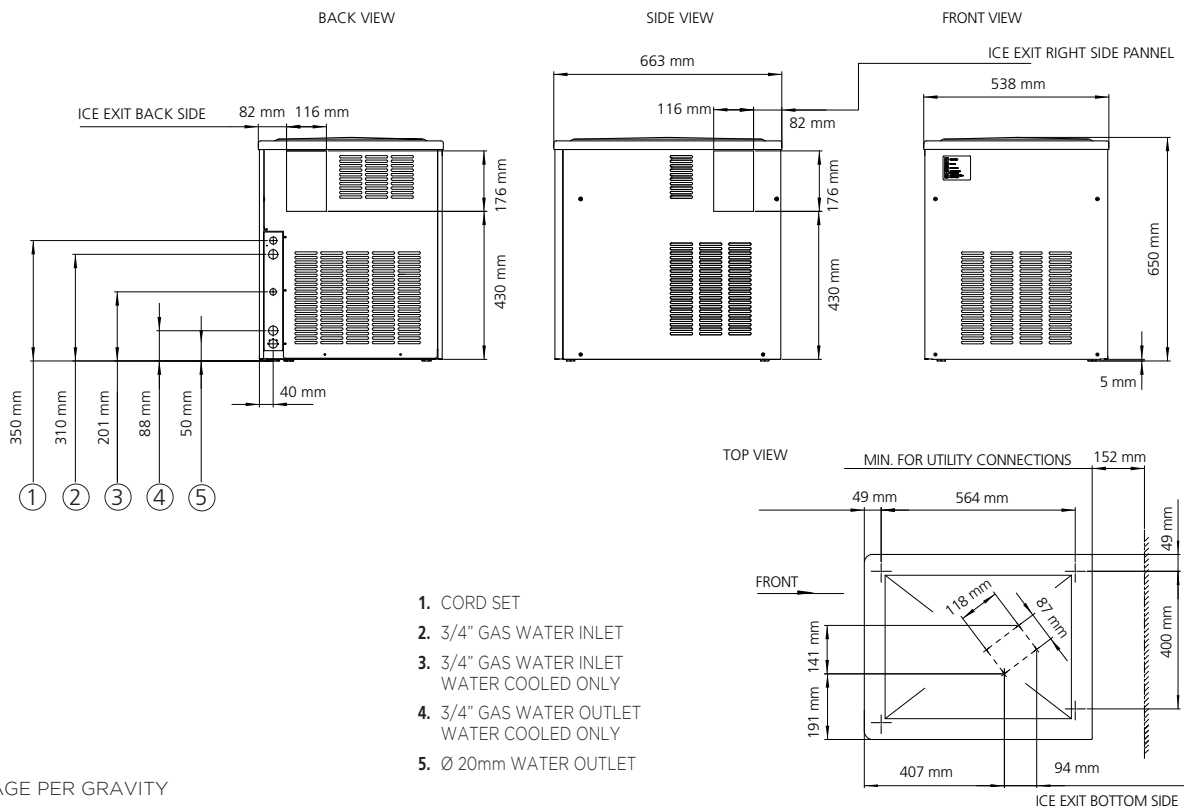
www.simag.it

SNM 300



320 kg Modular Ice Machine

Complete range: SNM 300 - SNM 500



DRAINAGE PER GRAVITY

Operating Limits

	Minimum	Maximum
Air temperature	10°C	43°C
Water temperature	5°C	38°C
Water pressure	1 bar	5 bar
Electrical voltage	-10 %	+10 %

Specifications and design are subject to change without notice

Model	Voltage	Daily production kg		Power input Watt (*)	Refrigerant		Fuse A	Consumptions (**)		
		10°C/10°C	21°C/10°C		Type	Charge kg		kWh/100kg	kWh/24h	Water l/h
SNM 300 A	230/50/1	320	310	1250	R452A	0.900	10	12.7	28	10.0
SNM 300 W	230/50/1	305	290	1000	R452A	57.000	10	9.6	23	136.0
SNM 300 A	220/60/1	270	n.a.	n.a.	R404A	n.a.	10	n.a.	n.a.	n.a.
SNM 300 W	220/60/1	270	n.a.	n.a.	R404A	n.a.	10	n.a.	n.a.	n.a.

(*) Power Input: at 43°C Ambient Temperature

(**) Water Consumption: at 32°C Air and 21°C Water