

# S I m A G

Via Risorgimento, 4 - 20017 Mazzo di Rho (Mi) Italy - Tel: ++39 02 93900215 - Fax: ++39 02 93900226

Web Site : [www.simag.it](http://www.simag.it) - e-mail sales : [sales@simag.it](mailto:sales@simag.it) - e-mail service : [service@simag.it](mailto:service@simag.it)

## SERVICE BULLETIN – 01/ MARCH 2006

### SP - SPR SERIES PC BOARD NEW RELEASE

Starting from the following Serial Numbers:

SP 125	s/n	ZA 1973	SPR 80	s/n	OA 4153
SP 255	s/n	ZB 2236	SPR 120	s/n	OC 0194
SP 405	s/n	ZC 1947	SPR 165	s/n	OB 2211
SP 605	s/n	ZD 1812			
SP 1205	s/n	ZE 1129			

The PC Board used on both SP & SPR Flaker Machines has been changed in its software by keeping running the drive motor for 3 minutes after the tripping OFF at BIN FULL, in order to clean up all ice flakes from the inside of the evaporator.

The same happens when the Ice Machine Trips OFF at:

- No water
- Too hi evaporating temperature
- Too hi condensing temperature

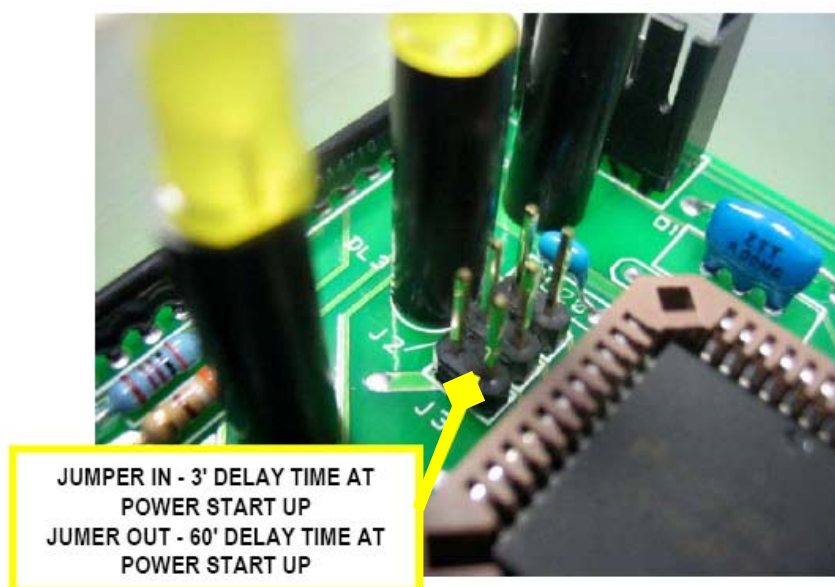
Only when it Trips OFF at Wrong/NO/Slow rotation, the gear motor stops immediately.

Moreover the new release of the PC Board is also equipped with a Jumper ( JP2, on Pro.El.Ind version, and JP3, on Syen one as shown on attached drawing ) to control the delay time, at any Start Up only ( when Ice Machine is Switched OFF and ON at Main Power Switch ), of:

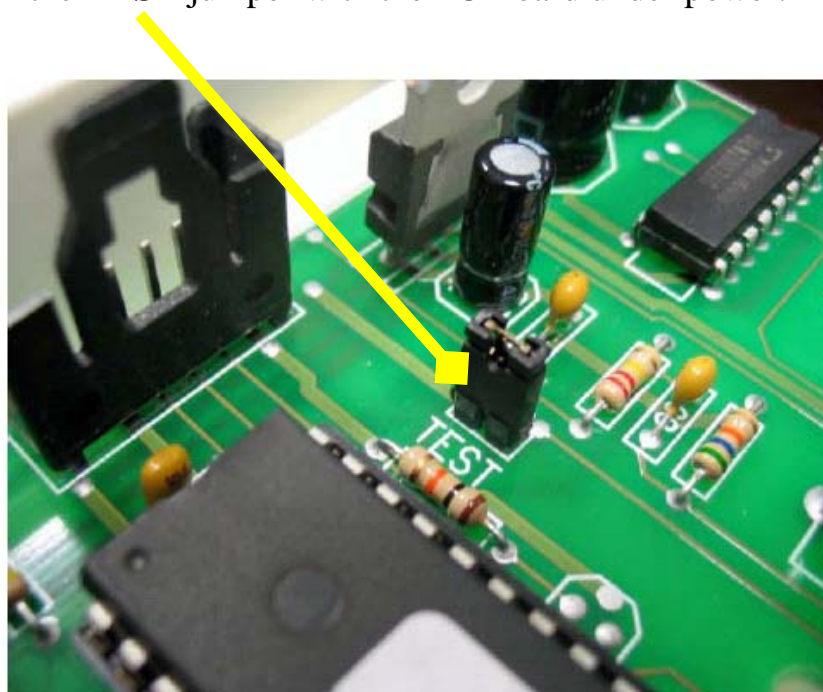
- 3' Jumper IN – ALL SP & SPR units except SPN 1205
- 60' Jumper OUT – SPN 1205 only

so to allow the crankcase heater to heat up the compressor for 60' on SPN 1205 only.

When SPN 1205 trips OFF during the normal operation ( Bin Full, No Water ) the Ice Machine restart after a delay time of 3' as per standard setting.



In case the installer/technician need to by-pass the 3/60' delay time, it's necessary to jump the two contacts of the **TEST** jumper with the PC Board under power.

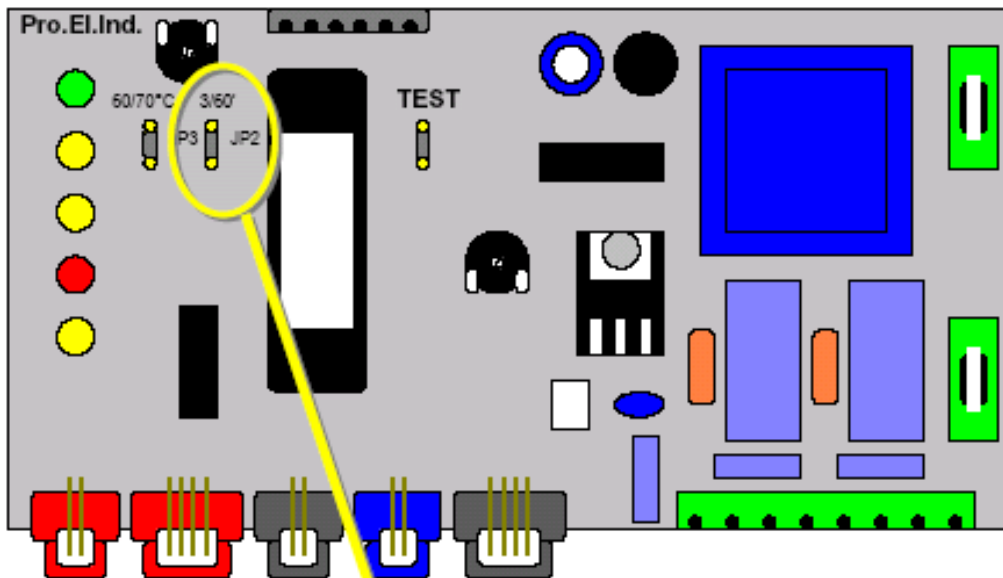


This new release of the Flakers PC Board is available under the same Part Number - 620462 02 - and it is perfectly exchangeable with the previous one.

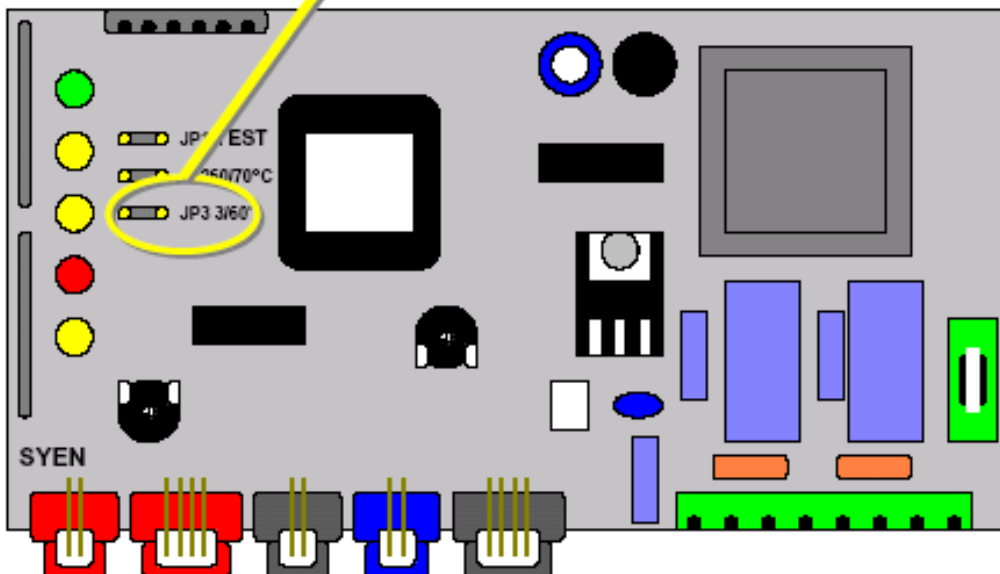
As soon as we will run out of stock of current PC Board we will supply the new one.

We would also remind that in case the TEST contacts are jumped together (it is a possibility when PC Board is replaced as Spare Parts), the Ice Machine start up immediately with all the electrical parts (Compressor, Drive Motor and Fan Motor start together with no delay). This for 3 minutes then the Ice Machine stops with all LEDs blinking.

Moreover, the YELLOW LED of BIN FULL is now blinking slow, when the light beam is cut out (Tripping OFF transitory) and blinking fast, when light beam is resumed (Switching ON transitory).



**JUMPER IN > 3' DELAY TIME AT FIRST START UP  
JUMPER OUT > 60' DELAY TIME AT FIRST START UP**



# SIMAG

ICE MACHINES

[www.simag.it](http://www.simag.it)

SIMAG  
via Risorgimento, 4  
20017 Mazzo di Rho (MI) - Italy  
Tel. +39 02 93900215 (Commerciale - Sales Dept.)  
Tel. +39 02 93960357 (Assistenza - Service Dept.)  
Fax +39 02 93900226 (Commerciale - Sales Dept.)  
Fax +39 02 93960366 (Assistenza - Service Dept.)  
e-mail: [sales@simag.it](mailto:sales@simag.it)  
e-mail: [service@simag.it](mailto:service@simag.it)

Singapore Office  
SIMAG FAR EAST  
627A Aljunied Road  
04-04 Biztech Centre  
Singapore 389842  
Tel. ++65 6738 5393  
Fax ++65 6738 1959  
e-mail: [scotsice@singnet.com.sg](mailto:scotsice@singnet.com.sg)



Certified ISO 9001  
TOTAL QUALITY

